



United Federation of H.O. Racers Association

2009 National Championship Races June 25-28, 2009

Breezewood Fire Hall

150 Municipal Rd. Breezewood, PA

Six Great Tracks for plenty of practice time!

Raffle for 4' X 12' Wiztrack

Schedule of events

Thursday 06/25/09

7:00AM - Open Setup
10:00AM - Open Practice
7:00PM - Oval Support Race
 Super Stock/Nascar Bodies
10:00PM - Close

Friday 06/26/09

9:00AM - Open
Registration & Practice
6:30PM - Membership Meeting (all tracks off)
7:00PM - Brass Car support Race
8:00PM - Super Stock Tech & Qualifying
9:00PM - Modified Tech & Qualifying
9:30PM - Unlimited Tech & Qualifying
11:00PM - Close

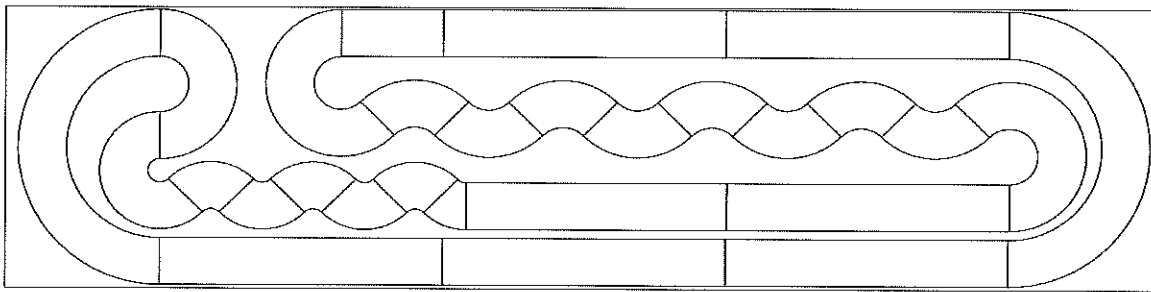
Saturday 06/27/09

8:00AM - Open
8:30AM - Drivers Meeting
10:00AM - Super Stock Race
12:30PM - Modified Race
2:00PM - Unlimited Race
6:00PM - T-Jet Tech & Qualifying
8:00PM - Restricted Open Tech & Qualifying
11:00PM - Close

Sunday 06/28/09

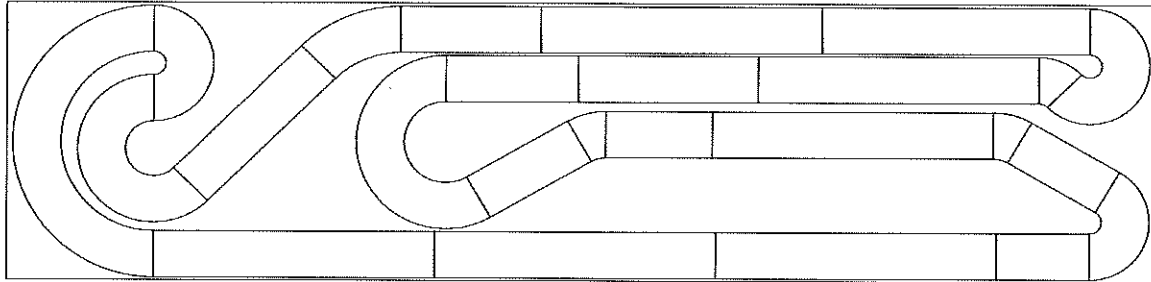
8:00AM - Open
8:30AM - T-Jet Race
9:30AM - Restricted Open Race
11:00AM - AM Modified Tech and Race
Awards Ceremony & Raffle to follow racing

You must be in attendance to claim race prizes & door prizes



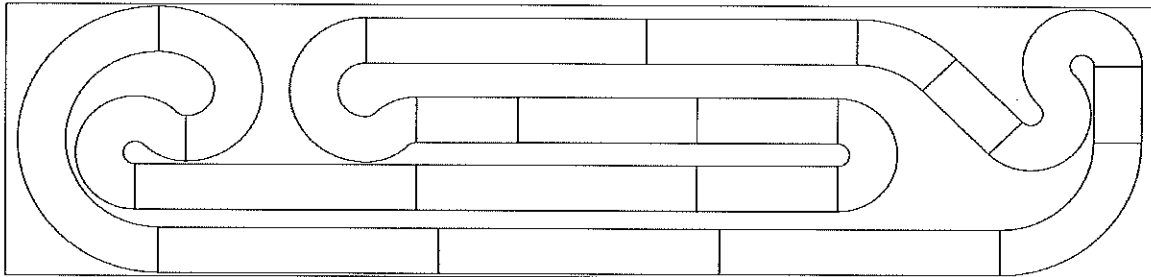
track direction →

Super Stock
Wiztrack 4' X16' (Black)
Power supply
Trix Trax & Graylab
Owner Bob Zelano



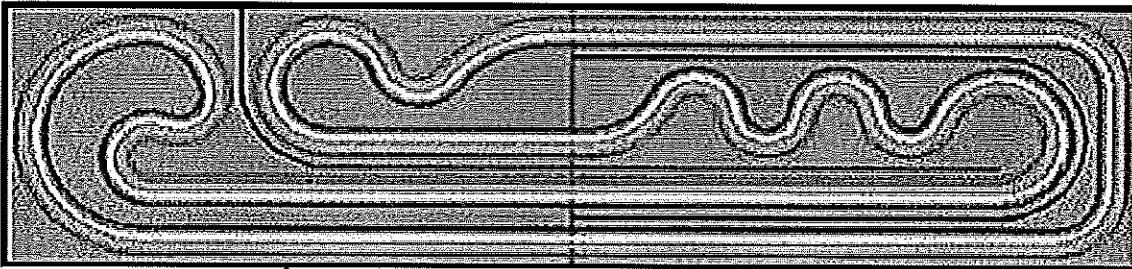
track direction →

Amateur Modified
Wiztrack 4' X16' (Black)
Power supply
Trix Trax & Graylab
Owner - Wizzard
For sale



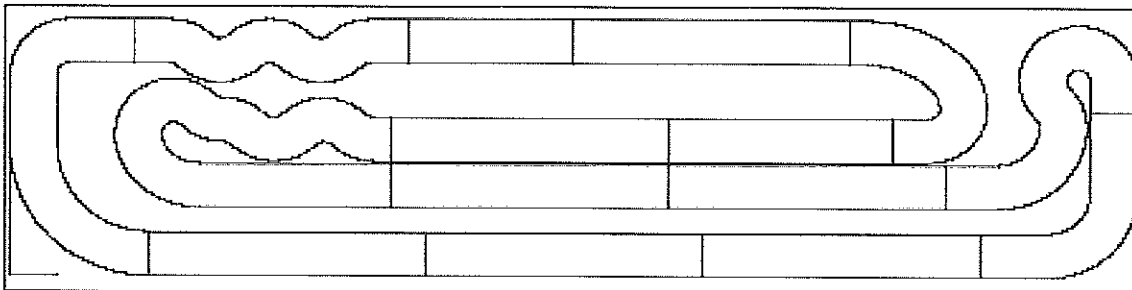
← track direction

Modified
Wiztrack 4' X16' (Gray)
Power supply
Computer system
Owner - Eric Robeson



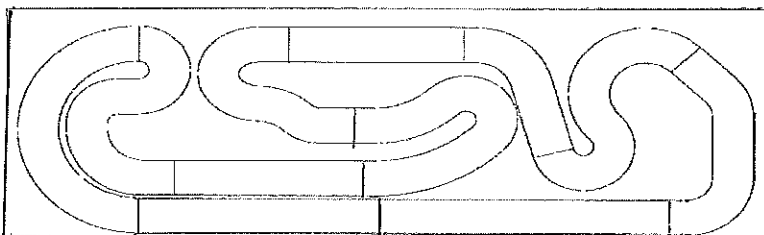
→ **DRIVERS' STATION**

Restricted Open
Old wiztrack 4' X16'
Power Supply
Trix Trax & Graylab
Owner -Eric Peterson
For sale



track direction →

Unlimited
Wiztrack 4' X16' (Gray)
Power supply
Trix Trax & Graylab
Owner - Wizzard
For Sale



← track direction

Thunder Jet
Wiztrack 4 X 12 (Black)
Power supply
Trix Trax & Graylab
Raffle Track
\$20.00 per ticket /75 ticket total

Over \$1500.00 in cash and prizes

Participant plaques to all entries

PLAQUES FOR 1ST THROUGH 4TH

Awards to all winners of support races

Raffle for the T-Jet track \$20.00 per ticket

Winner of the T-Jet race pulls the ticket at the Awards Ceremony

Ticket must be present to win

Entry Fees:

Amateur Modified	\$10.00/\$15.00 non member
Super Stock	\$15.00/\$20.00 non member
Modified	\$20.00/\$25.00 non member
Restricted Open	\$25.00/\$30.00 non member
Unlimited	\$25.00/\$30.00 non member
Thunder-Jet	\$15.00/\$20.00 non member
Support Races	\$10.00/\$10.00 non member

Motels:

Best Western 814-735-4352, Howard Johnson 814-735-2200

Gateway Travel Lodge 814-735-4341, Holiday Inn Express 814-735-7666

Quality Inn 814-735-4311, Ramada Inn 814-735-4005

Other Motels:

Breezewood Motel, Hi-Way Motel, Panorama Motel, Ritchey's Redwood Motel
Stonewall Jackson's Motel, Village Motel, Wildwood Motel, Wiltshire Motel

Directions:

From I-76 & I-70west take Exit 161. At end of exit go onto US Rt. 30 west. Go 1/2 mile, through 3 stop lights. Make a right onto Municipal Rd, the fire hall is on your right.

From I-70east take exit 147. Make a left on US Rt. 30 west, make your first right onto Municipal Rd, the fire hall is on your right.



UFHORA/C.Lincoln
148 Deer Oak Lane
Bedford, PA 15522

Restaurants in

Breezewood:

McDonalds
Taco Bell
Hardees
Kentucky Fried Chicken
Wendys
Bob Evans
Perkins
Dennys
Gateway
Dairy Queen
Subway
Prime Rib Restaurant
Family House